

STUDENTS FIRST



**WIGSTON
COLLEGE**

Prospectus 2024/25



I am delighted that you are considering Wigston College. We are proud of our track record of success that enables students to make the best choices for higher education or career progression.

We offer a broad range of subjects to meet individual needs alongside the highest level of support and guidance provided by experienced staff who understand how to make the most of students' abilities and talents.

Sixth form is a time of enrichment when students complement their academic studies with other activities that broaden their minds and their circle of friends. We place a very high value on sport, music, clubs and activities. Students are encouraged to be involved in the local community. We understand the value to young people of contributing to society.

At Wigston College we believe that students learn best when they are excited and engaged with their subjects, where their learning is tailored to individual needs and where expectations are high. Students enjoy coming to Wigston College Sixth Form

where they are supported, stretched and challenged in order to achieve their personal best.

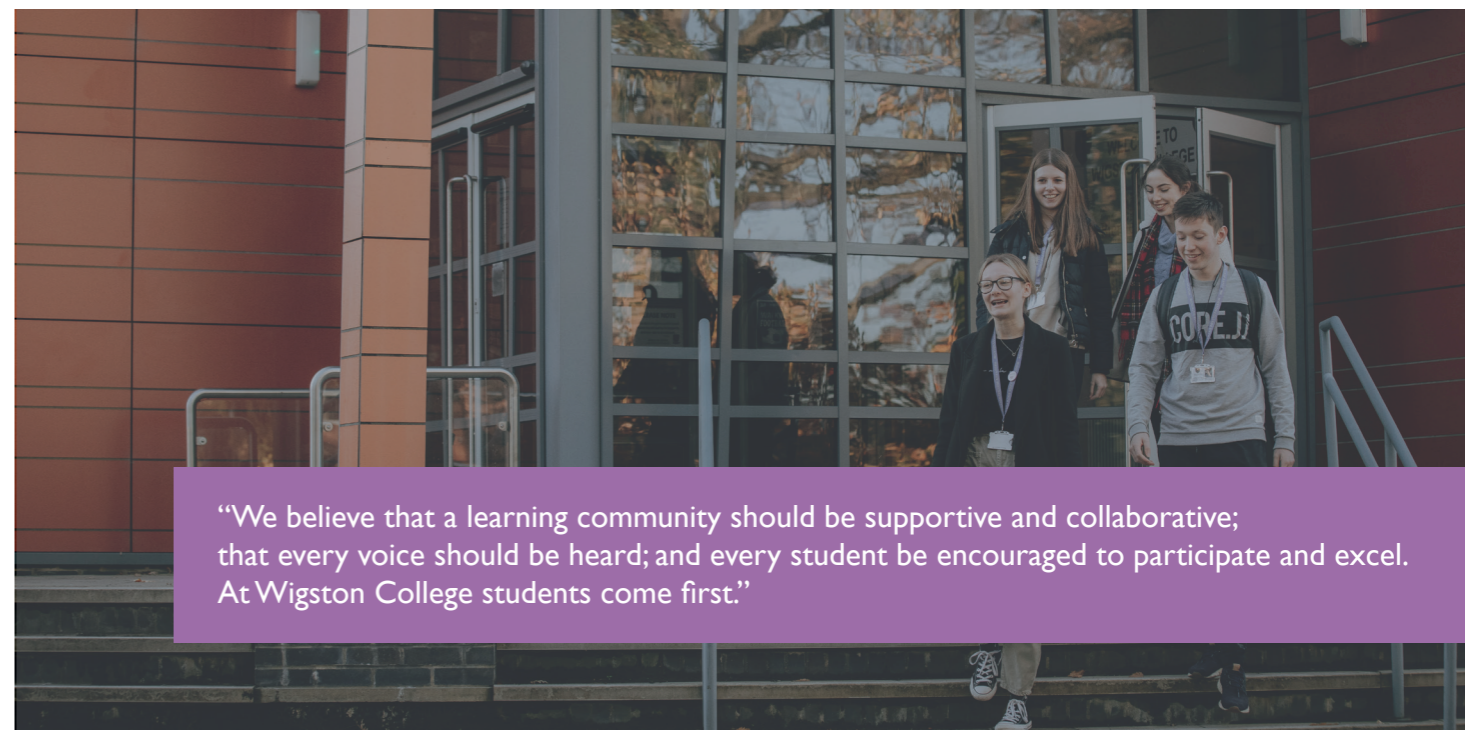
The sixth form is an exciting time in a young person's life and we will work with you to provide everything needed for future success and the best possible outcomes.

I look forward to meeting you.
Mike Wilson
Headteacher



“Students come first in this happy and caring community. Students feel well looked after by staff who know them well. Students know that staff are there when they need them.”
Ofsted May 2022

INDEX



“We believe that a learning community should be supportive and collaborative; that every voice should be heard; and every student be encouraged to participate and excel. At Wigston College students come first.”

01
ABOUT US

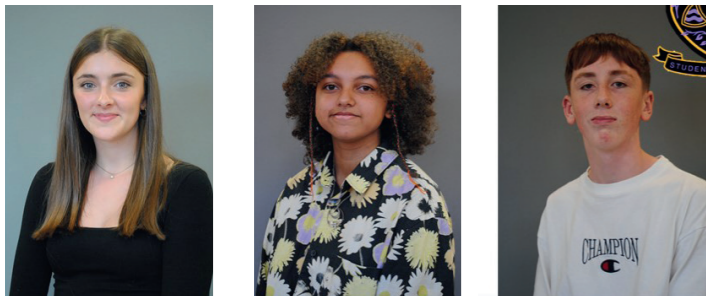
02
ADMISSION

03
THE COURSES

04
MEETING YOUR NEEDS

05
ENRICHMENT

06
APPLYING



Liv Addison, AJ Collins and Charlie Riggs

“Wigston College is an absolutely wonderful community of deeply passionate teachers and students. When I was here my teachers went out of their way to answer my questions about the material and give me guidance about my future. The staff are also really communicative and work so hard to enrich the experience of those who study here”

Andrew Clarke, University of Warwick, reading Mathematics

Wigston College is warm, welcoming, and undeniably passionate about providing the best possible learning environment for its students. We are delighted to have been elected to the student leadership team and as a group have big aims and aspirations to optimise our fellow students’ time here at the College.

Our smaller community enables every pupil to feel valued and significant, consequently creating a secure space to learn and develop as individuals. The dedicated staff at Wigston College create an unbeatable support network to guide their students through

their post 16 pathway, which allows them to make informed decisions about their future beyond Year 13. Advice and guidance is provided to support students whatever their aspirations are. This support comes in in a variety of forms be it one-to-one sessions, group talks, lectures, as well as consistent communication are provided by the Sixth Form Team, to offer advice and encouragement. As pupils here, we are proud that the College’s first and foremost priority is to fulfill the potential of each and every individual.

As well as the academic focus, the College offers a variety

of super and extra-curricular activities for all students. These include our enrichment programme, which is designed to help pupils gain experience beyond the classroom and acquire transferable skills that can be used in day-to-day life. Enrichment can range from volunteering at a sports clubs, undertaking charity work or supporting Key Stage 3 students at our neighboring Academy. Other extra-curricular activities include football, badminton, WAT productions and many more.

We are delighted that you are considering Wigston College as an option for your post

16 studies and look forward to welcoming you into our community. We ourselves have experienced the positive influence Wigston College has had on our lives, and believe it allows you as an individual not only to achieve your best academically but also thrive as an individual.

Liv Addison, Charlie Riggs and AJ Collins (Student Leadership Team)



Wigston College is a specialist Sixth Form Learning Centre.

We provide a learning programme that develops students’ capabilities.

Facilities, teaching and support are focused on A Levels and other Level 3 courses. Students will benefit from being in a learning environment geared to Advanced Level/ Level 3 studies, whilst benefitting from the close links with Wigston Academy and the community, which allows us to offer an extended range of enrichment and volunteering opportunities.

Students are able to access a range of study spaces throughout the College day to suit their preferred learning style. The Common Rooms are open all day for students to use as an informal study and social area.

Many departments provide independent study space for students in subject classrooms and in addition to timetabled teaching lessons, staff provide one-to-one support, small group sessions and advice and feedback via email. Choosing to study at Wigston College has significant benefits. We are large enough to offer

a wide variety of courses but small enough to provide you with the network of support required for you to make the successful transition from GCSE to A Level and Level 3 studies.

We offer a full package of pastoral support; form tutor, mentoring and external counselling services. The Sixth Form Team monitor and track student performance and well-being, intervening to offer support whenever required.



“Staff have high expectations of every student. Staff know about students’ aspirations for the future. They know their strengths and the things that might get in their way. Staff work with students and their families to make sure that students aim high. They provide high levels of support for every student. Staff help students to find solutions for themselves.”

Ofsted May 2022

Admission Requirements

(See website for details)

For admission to **Advanced Level** programmes of study, students are expected to achieve a minimum of 5 GCSEs at grade 5 and above or equivalent. Students must also meet all **individual subject entry criteria** as stipulated on our website. If students have the grades to take specific subjects but have a grade 3 in English Language or Mathematics or both, resit classes will be available.

Students can take a combination of A Level and other Level 3 courses (e.g. BTEC) if they so wish.

For students who have studied vocational courses along with GCSEs, a Merit or Distinction is required to progress on to A Level/Level 3 courses, unless otherwise stated on the course information pages of our website.

Students will be expected to have a proven track record of a positive attitude to learning

and a good record of attendance at Key Stage 4.

Most students study 3 subjects at A Level/Level 3 and personalised learning programmes are discussed at enrolment.

Where appropriate, students that have achieved GCSE grades 9-7 or equivalent in all subjects will be encouraged to take the Extended Project Qualification (EPQ) alongside their A Levels/Level 3 courses.

Students who elect to study Level 3 courses that contain elements of mathematics will be encouraged to also take Core Mathematics to support their studies. Please see the course information available on our website for more details.



Please note that all A Level courses run for a duration of 2 years, with the public examination taking place at the end of Year 13.

To move automatically from Year 12 to Year 13 in any subject a student will require:

- A minimum of a grade D in their end of year assessment or Pre Public Examination or a Pass in coursework.
- A good level of attendance during Year 12.
- Students will also be expected to demonstrate a positive attitude to learning.

Wigston College realises the importance of, and prides itself on, the level of support we are able to offer our students. Academic support is available through our mentoring programme, one-to-one subject support or peer-to-peer support. Additional intervention classes within each department are also available. Any support offered will be done through consultation and in partnership with students, parents and carers.

Courses

A Level Courses

Art and Design

Biology

Business

Chemistry

Computer Science

Dance

Drama and Theatre

Economics

English Language

English Literature

Film Studies

French

Further Mathematics

Geography

Politics

History

Law

Mathematics

Media Studies

Physical Education

Physics

Psychology

Sociology

Spanish

Please be aware that some courses may not run in Year 12 if numbers interested are very low. However the courses listed have been developed to minimise the prospect of this occurring.

Applicants will be contacted if combinations of subjects chosen clash on the timetable.

Other Level 3 Courses

Applied Science (BTEC Extended Certificate)

Core Mathematics

Criminology (WJEC Diploma)

Extended Project Qualification (AQA)

Health & Social Care (Cambridge Technicals Extended Certificate – Single Option)

Health & Social Care (Cambridge Technicals Diploma – Double Option)

Information Technology (Cambridge Technicals Extended Certificate)

Sport & Physical Activity (Cambridge Technicals Extended Certificate – Single Option)

Sport & Physical Activity (Cambridge Technicals Diploma – Double Option)

For all of our individual subject entry criteria please see the course pages available on our website.

How to choose your courses

- Choose subjects that you enjoy and play to your strengths!
- Look at university websites to check A Level/Level 3 entry requirements for specific degree subjects.
- Some universities, such as Oxford and Cambridge, produce lists of preferred A Level subjects.
- Certain careers require particular A Level/Level 3 subjects.
- Look at higher level and degree apprenticeship websites.
- Refer to our subject information sheets available on our website.



We offer a breadth of performing arts opportunities that allow students to explore and develop their skills.

Many of these students go on to further their education at top performing arts schools such as Laine Theatre Arts, London Contemporary Dance School, LAMDA, RADA, LIPA, Royal Central, Laban and many more.

"It has been a privilege to be a member of the Wigston College performing arts programme. The vast range of opportunities and the dedication of the staff has enabled me to be where I am today; allowing me to pursue the career of my dreams."

Zac Peachey, Royal Birmingham Conservatoire, reading Music



Leicestershire Post 16 Bursary Information

If a student needs financial support to help them stay in education after the age of 16 they can apply to us for the 16-19 Bursary. The 16-19 Bursary is targeted towards those young people considered most in need of financial support. The Government has identified a priority group of young people and has asked that schools and colleges give priority to this group first and offer

them a guaranteed Bursary. After this group has been considered the College has a limited amount of funding available for other young people in need of financial support.

The College has set eligibility criteria to ensure that the funds go to those who are seen to need it most. Any young person who meets these eligibility

criteria can apply for a Discretionary Bursary. These funds can support students with the costs of transport, books, educational visits or other course materials or equipment required to participate.

“The College has helped me in so many ways in my two short years. Its welcoming and close community of staff and students have fostered confidence I didn’t have before in everyday life. Teachers have covered the syllabus extraordinarily well while encouraging the independent learning needed for any path you may take. Events organised by the Sixth Form Team have given great insight into potential future prospects and opportunities. These reasons among many others are why I can wholeheartedly recommend Wigston College.”



Ben Holmes, University of Nottingham, reading Physics

and Degree Level Apprenticeships) and employment opportunities, and representatives from external agencies visit the College to provide further impartial advice and guidance.

Careers Guidance

All students are supported as they make important decisions about their future beyond Level 3 study.

Professionally qualified staff can advise about Higher Education, Apprenticeships (including Higher

Students seeking employment after A Level/Level 3 courses attend Life Skills classes with a particular focus on developing employability skills.

Each year about 75% of Year 13 students go off to universities including those in the Russell Group.

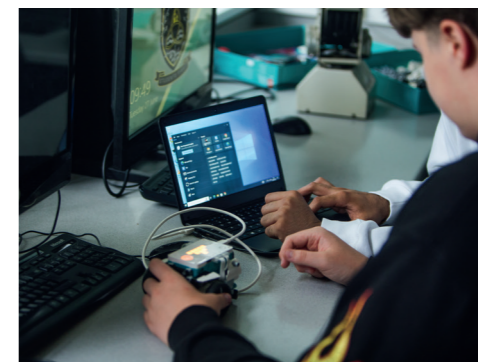
We have a tradition of supporting our most high achieving students in their applications to Oxbridge and to prestigious medicine and law degrees. All students are guided through the university application process as smoothly and early as possible, with particular assistance given to the writing of the personal statement.

To support students in securing Higher Education places, employment or an apprenticeship, we offer an extensive range of activities which includes a one week work experience placement, career talks, workshops and networking sessions with local employers. This develops students’ knowledge of the world of work and employability skills.

We provide extensive advice, support and guidance to students. We have high aspirations and want them to achieve their best. Wigston College is extremely proud of the fact that over the last 6 years every single one of our graduates has found a place in either higher education, an apprenticeship, degree apprenticeship or employment.

The Life Skills and Enrichment programmes broaden the skills of our students beyond the academic curriculum. Both programmes allow students to gain the necessary skills to be successful in the world of work and make them more attractive to prospective employers. Students contribute to the College and community in a wide variety of ways e.g:

- Supporting in The Hub
- Volunteering in the wider community
- Representing the views of fellow students as part of Student Government
- Acting as Wigston College Ambassadors at events
- Being part of the Charity, Social, Wellbeing, Environmental or Culture & Diversity Committees
- Taking a role as part of the Student Wellbeing Team
- Supporting KS3 & 4 lessons at Wigston Academy
- Mentoring KS4 students at Wigston Academy



05 ENRICHMENT

“I thoroughly enjoyed my time at Wigston College. Coming from another school I was worried about feeling welcome, but the community there is incredible and I felt at home right away. Through my two years I was challenged, supported and encouraged by my teachers, both academically and outside of the classroom in extracurricular and enrichment activities. I loved that I was supported in finding an enrichment placement at Birkett House Special School which really helped when it came to applying for my degree course. I would always recommend Wigston College to anyone, it truly is a home from home”

Charlotte Watts, University of Derby, reading Education Studies

Student Wellbeing

Student wellbeing is an area of strength at Wigston College and we pride ourselves on supporting our students not just academically but pastorally as well. We have a dedicated Student Wellbeing Lead as part of our Sixth Form Team.

We have worked hard to develop activities that promote student wellbeing throughout the College. This includes during our tutor time programme where students learn skills such as practising mindfulness, dealing with stress, time management, exam skills and retrieval practice.

We have wellbeing peer mentors who are in place to add another level of wellbeing support to our student body. We are also proud to have a dedicated Wellbeing Committee at the College who work to make the College a place where students can be happy and flourish during their time with us.

“Students benefit from a wide variety of experiences that develop their confidence and resilience. The College prepares them to make a meaningful contribution to society, now and in the future.”

Ofsted May 2022



“The College provides high-quality careers education. Students are well informed about the full range of education and employment pathways available. Staff support students well with applications... staff encourage students to aim high, and they do.”

Ofsted May 2022

Applications can be made online via Positive Steps at 16 (PS16) an online central admissions service used by Leicestershire schools and colleges, or via the application form available on our website.

If your application is received by 31st January 2024, you will be invited to an interview in February/March 2024.

Conditional places will be offered to successful applicants in writing and you will then receive an invitation to our Induction – in June 2024.

06 APPLYING

“The staff at Wigston College recognised my potential and went above and beyond in making sure I achieved it. The lessons were really tailored towards my individual needs, and help was always at hand, meaning I felt constantly engaged with my subjects and ambitious to strive to do my best. The enrichment opportunities provided at the College are also something that they excel at. My weekly placement at a nursery and work experience at the Leicester Royal Infirmary not only boosted my application to competitive universities but shaped me into an independent and interpersonal individual. I can confidently say that I feel ready for my next steps in life.”

Ella Foster, University of Birmingham, reading Psychology

All college policies can be found on our website at www.wigstoncollege.org
The details in this publication are correct at the time of printing



Part of Wigston Academies Trust - Registered Address:
Station Road, Wigston, Leicestershire. LE18 2DU.

Telephone: 0116 2881228 Wigston Academies Trust is a
charitable company limited by guarantee registered in
England and Wales.

Company Registration No: 07975551

 /wigstoncollege

 @WigstonCollege



**Wigston College, Station Road,
Wigston, Leicester LE18 2DS**

Tel: 0116 2881611

**Web: www.wigstoncollege.org
Email: apply@wigstoncollege.org**

